

ANAS S.p.A.

Italian National Authority for Roads

Veneto Regional Department



**INTRODUCTION OF ANAS TO THE NORWEGIAN
ASPHALT ASSOCIATION**

**Ettore de la Grennelais, PhD
Head of the Maintenance Department**

Verona, October 6th, 2011



- **Anas was established by Law in 1928, as the Government agency to develop, improve and maintain Italian National road network**
- **Since year 2003 Anas has become a Public Company, 100% owned by the State and operating on behalf of the Transportation, Public Works & Infrastructures Ministry to the same goals**
- **Currently undertakes a major process of re-organization to lessen its burden to public finances**
- **Directly operates on abt. 24.500 km of national roads, highways and motorways**
- **Invigilates on abt. 5.700 km of public property toll-highways, managed by private companies on concession terms**
- **Currently employs a staff of 6.480**
- **Owns a capital of abt. € 2,5 billions**



The Italian roads network sees different subjects acting:

- **Cities: competent for local roads within their territorial boundaries**
- **Provinces: competent for interconnecting roads within their administrative borough**
- **Regions: competent for primary road network within their administrative borough**
- **Private companies exerting toll-paying highways**
- **Anas: manages the backbone of the roads system, the so-called “National Roads”, that are owned by the State and ensure long-span connection among different parts of the Country; the Company also runs some non toll-paying highways.**

Anas also acts as the technical and administrative Body responsible to coordinate the actions and policies of the above subjects; and it drafts licenced technical norms and road building codes that, prior to year 2003, were automatically held as State laws, while now hold benchmark status and are the usual reference operational rules in Italy.



Anas core business is to deal with roads, starting from their design.

The Company produces mainly in-house projects, either for completely new constructions or for major refurbishments on the managed road network.

Anas technical bodies also provide or assess designs as a service to other public and private partners.

In year 2010, some of the activity performed in this field lead to rather imposing figures:

- **Preliminary Projects: 20 for € 2,7 billions**
- **Definitive Projects: 52 for € 11,4 billions**
- **Executive Projects: 22 for € 3,3 billions**

Anas produces its own projects, or assess projects proposed by other public or private-partner bodies, in order to answer the infrastructural general demand.

But - not all the projects become reality, even more now in 2011...

On a yearly basis a proposal of new roads realization programme is drafted by Anas, and offered to the competent governmental body for infrastructural policy: the Ministry for Infrastructures.

The latter, upon advice of the Ministry of Finances that manages the available public financial resources, usually funds a selection of the proposed works that the Company can therefore realize.



The Company mainly performs in-house project management of all the construction activities on its road network.

It also offer project management services and assistance to other public bodies that build roads (i.e. Cities, Provinces, Regions).

In year 2010 Anas had a large number of ongoing road-yards to build new roads:

- 113 on the National road network, for € 11,1 billions (+ 24% towards year 2009)**
- 15 on the directly-operated Highways network, for € 4,08 billions (+ 6% towards year 2009).**

In the same year 2010 the completed works leaded to the opening of 27 road trunks, for € 0,61 billions.



Anas has by Law the duty to maintain&refurbish the national roads network.

The Company fulfils this goal by mean of two different kinds of interventions.

The “Ordinary maintenance” is the day-to-day activity needed to keep the existing network safe and functional: it is performed, since year 2003, on a legal contract between Anas and the Ministry of Infrastructures.

The latter transfers abt. € 200 millions/year for these activities on the entire national road network: an average gross cost of €/km 8.200 per year for day-to-day maintenance of any kind.

If we consider that more than 70% of Italian road and highway network has been built prior to 1980 and in some cases roads dating from Roman times are still virtually in use today...

Ordinary maintenance (overview on year 2010):

- 1.311 contracts tendered, for € 183,8 millions
- 1.187 contracts completed, for € 154,1 millions



Anas also performs “Extra-ordinary maintenance”, i.e. the non-recurrent activity needed to refurbish parts of the existing network, in order to ensure their prior safety and functionality standards: this is done, since year 2003, on a yearly programme drafted, discussed and approved with the Government on the same principle and in the same way of the new constructions as above.

Major refurbishments (a.k.a. Extra-ordinary maintenance – overview on year 2010):

- 322 contracts tendered, for € 219,6 millions**
- 368 contracts completed, for € 250,7 millions**

- ❖ **General Headquarters: Rome**
- ❖ **Regional Branches and Offices:**
 - ✓ **19 Regional Departments (including Veneto)**
 - ✓ **4 Inspective Offices (on non-Anas operated toll-highways)**
 - ✓ **1 Special Bureau for the Salerno-Reggio Calabria highway**
 - ✓ **16 Territorial Offices**
 - ✓ **National Road Lab in Cesano (Rome)**



Seat of the Regional Department: **Venice**

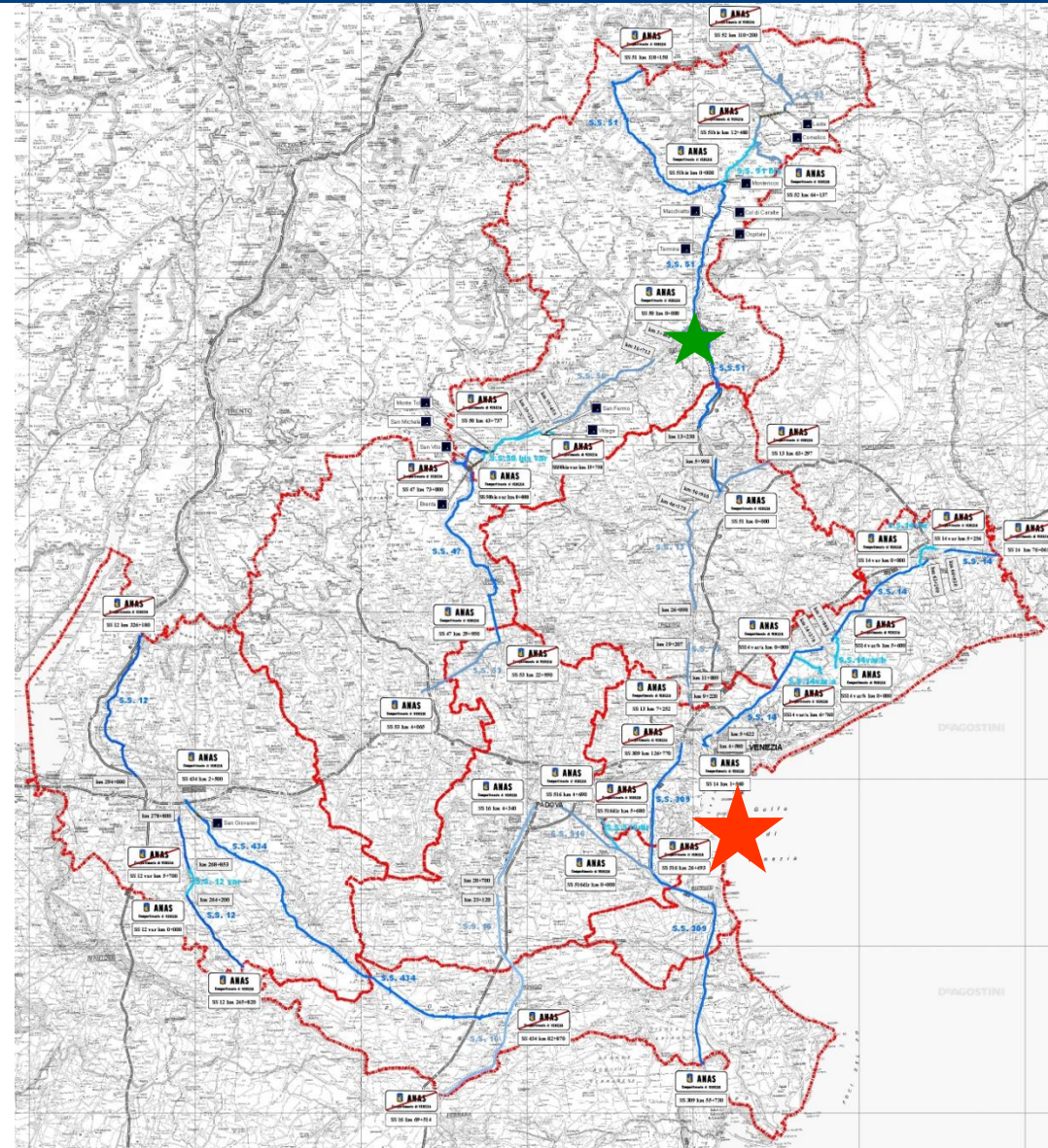
Territorial Office: **Belluno**

Managed Network: abt. 750 km

- ✓ 110 km double carriageway
- ✓ 640 km single carriageway
- ✓ 13 tunnels for 17 km
- ✓ no highways

Staff: 160:

- ✓ 4 executives
- ✓ 110 bureau staff
- ✓ 56 on-the-road personnel



ANAS S.p.A.: Veneto Department / 2 Organization

Administrative Area

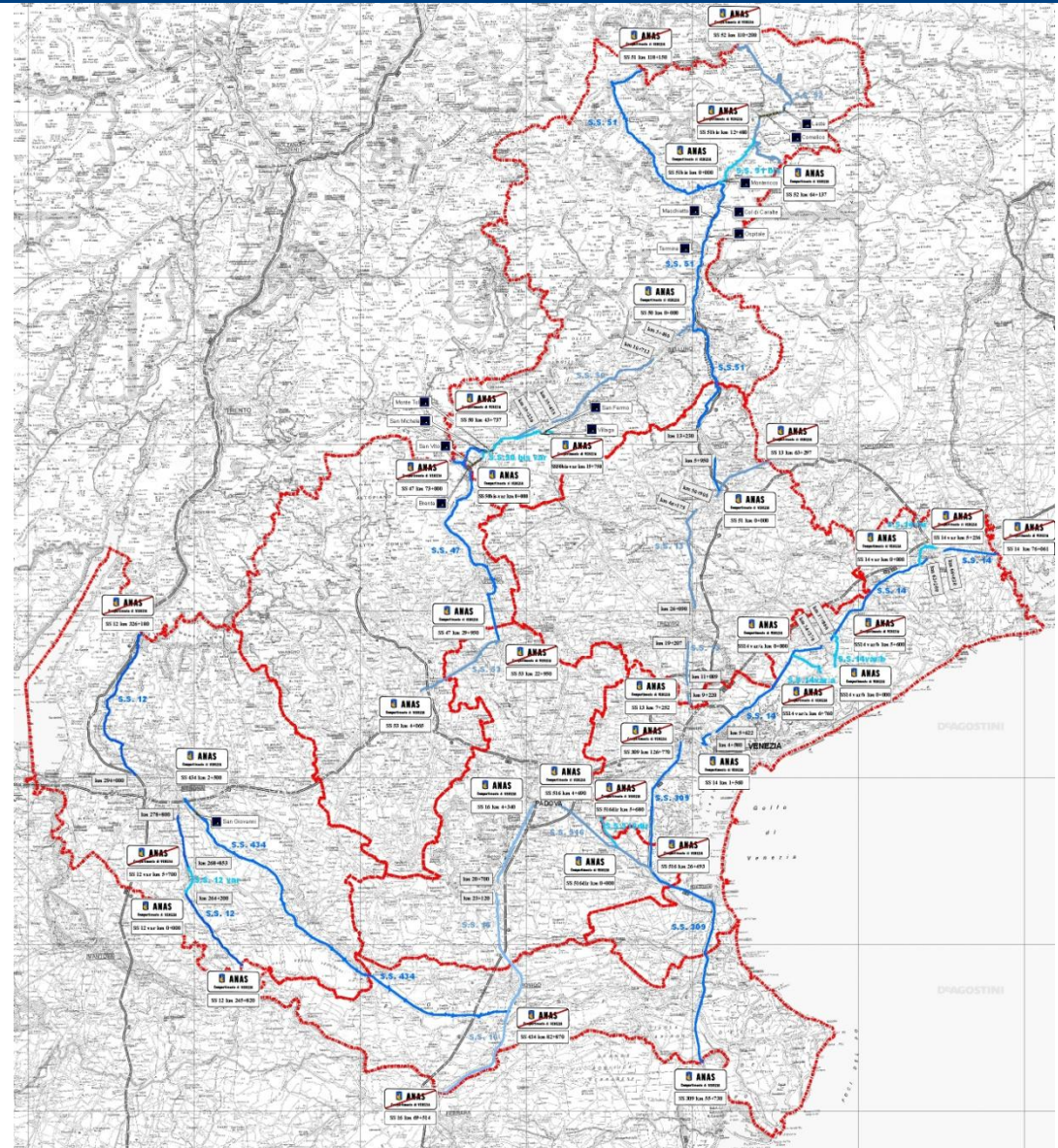
Deals with: tenders and contracts,
administrative issues

Design & New Works Area

Deals with: locally originated projects
issues < M€ 20 and project management
of new works in progress within the
Region (currently abt. M€ 80)

Maintenance Area

Deals with: every aspect of ordinary and
extra-ordinary maintenance on regional
roads network. Currently managing abt
M€ 10 for yearly ordinary maintenance
and M€ 23 for active major refurbishment
works.

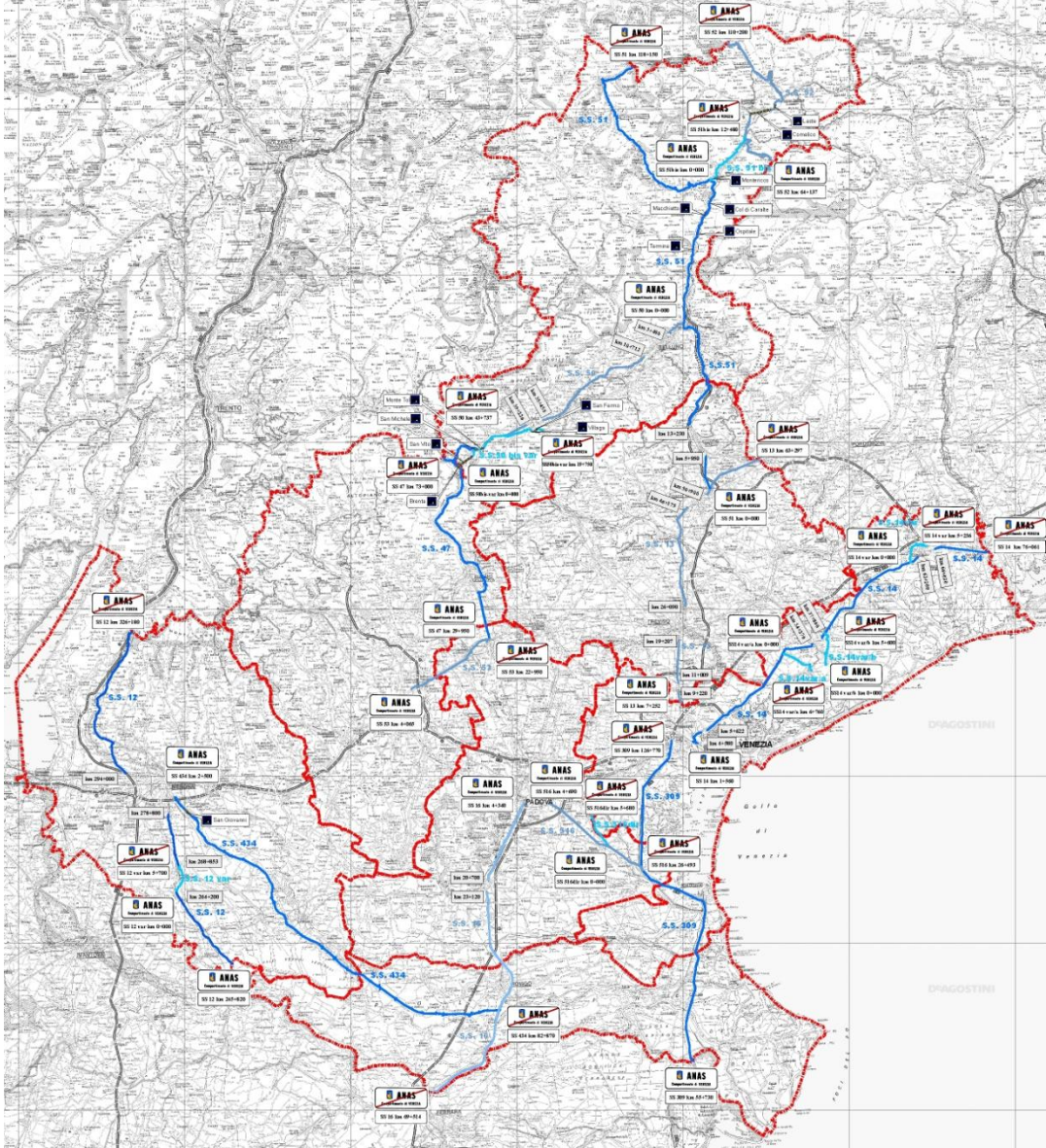


ANAS S.p.A.: Veneto Department / 3 Circulation



Seasonal Average Traffic (2010)

		SUMMER	AUTUMN	WINTER	SPRING
		vehicles gross avg n./day	vehicles gross avg n./day	vehicles gross avg n./day	vehicles gross avg n./day
SS 12	km 263+010	8.534	10.976	9.795	9.960
	km 277+650	13.487	15.710	14.271	15.257
	km 304+550	26.566	25.053	24.525	25.708
	km 310+670	6.004	4.424	4.094	4.690
SS 13	km 8+200	21.330	22.715	22.463	23.516
	km 36+002	18.515	19.127	18.362	18.674
SS 14	km 7bis+200	13.836	10.993	10.348	12.352
	km 25+090	12.078	8.400	8.693	9.117
	km 42+980	14.815	14.968	14.760	15.219
	km 71+700	16.838	10.047	10.498	13.265
SS 14 Var	km 2+980	8.097	7.694	8.120	8.444
SS 14 Var/A	km 2+400	17.424	4.905	5.832	9.617
SS 14 Var/B	km 4+050	14.752	7.526	7.682	9.410
SS 16	km 23+870	18.241	19.168	19.722	18.783
	km 53+300	17.260	16.204	15.719	16.540
	km 67+700	9.425	10.368	9.784	9.513
SS 47	km 32+600	17.606	17.887	17.806	18.103
	km 56+550	17.877	11.760	11.497	12.525

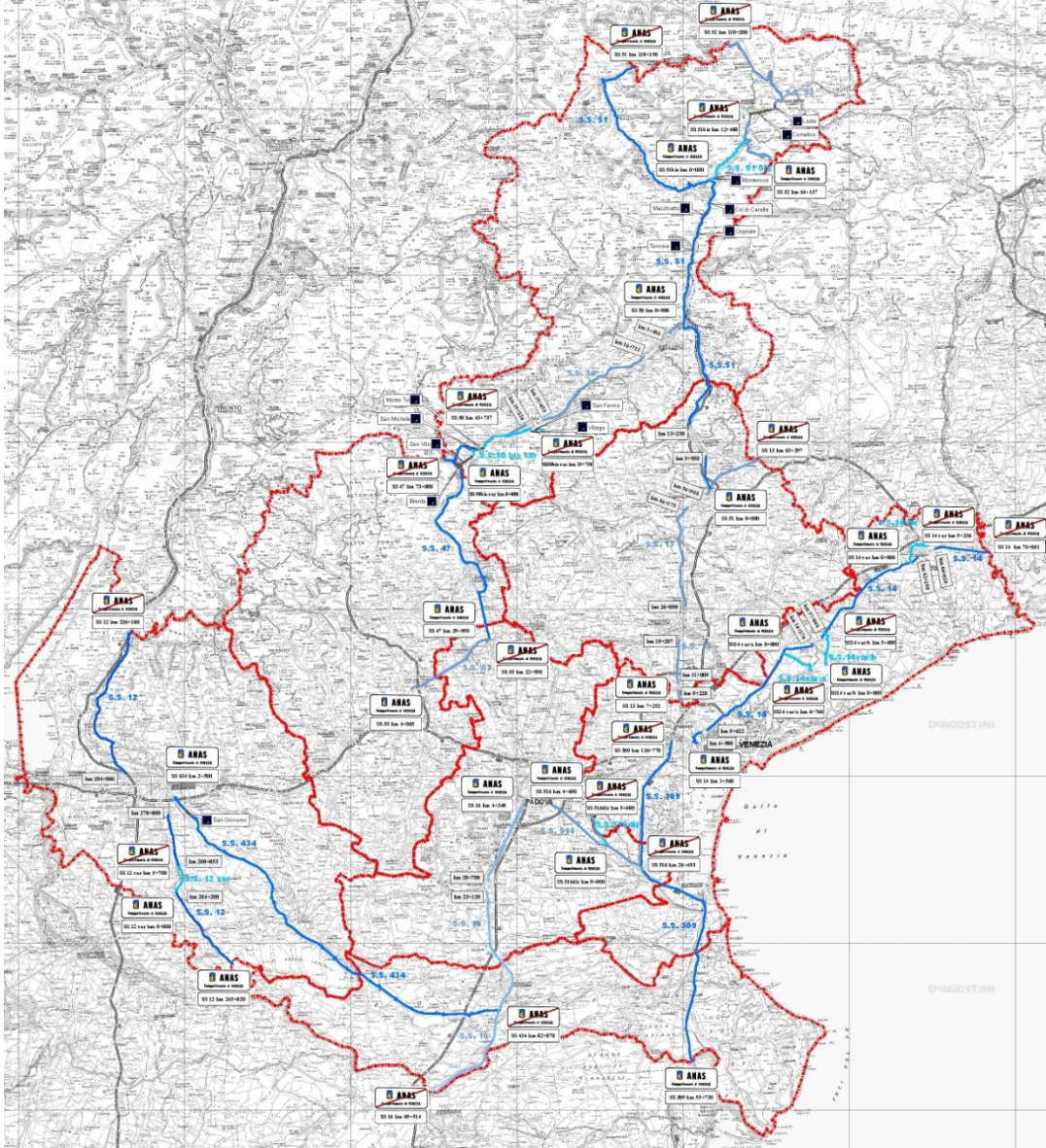


ANAS S.p.A.: Veneto Department / 3 Circulation



Seasonal Average Traffic (2010)

		SUMMER	AUTUMN	WINTER	SPRING
		vehicles gross avg n./day	vehicles gross avg n./day	vehicles gross avg n./day	vehicles gross avg n./day
SS 50	km 11+670	12.103	14.864	14.242	18.373
SS 50 BIS VAR	km 7+200	12.497	9.080	9.138	10.367
SS51	km 1+970	14.645	16.799	15.079	18.871
	km 19+510	4.517	3.018	2.193	3.226
	km 49+350	23.146	15.855	17.413	15.911
	km 74+700	13.469	8.714	9.636	7.860
	km 118+100	5.505	1.786	1.943	1.165
SS 51 BIS	km 8+400	13.923	9.180	8.311	8.344
SS 52	km 79+150	12.669	6.794	6.365	5.994
	km 110+100	3.661	1.106	1.507	714
SS 53	km 5+970	19.738	21.492	24.127	26.206
	km 18+550	11.857	13.279	13.943	14.323
SS 309	km 66+850	21.731	18.167	18.186	19.936
	km 87+760	34.955	20.951	19.900	23.820
	km 119+900	26.597	21.043	22.366	24.117
SS 434	km 3+170	48.495	45.865		47.212
	km 21+520	52.395	47.637		50.711
	km 55+550	28.834	26.467	23.722	28.306
SS 516	km 20+600	23.737	16.174	14.823	19.052
SS 516 DIR	km 2+800	14.752	14.031	11.408	13.771



Takk for din oppmerksomhet

Thank you for your kind attention

